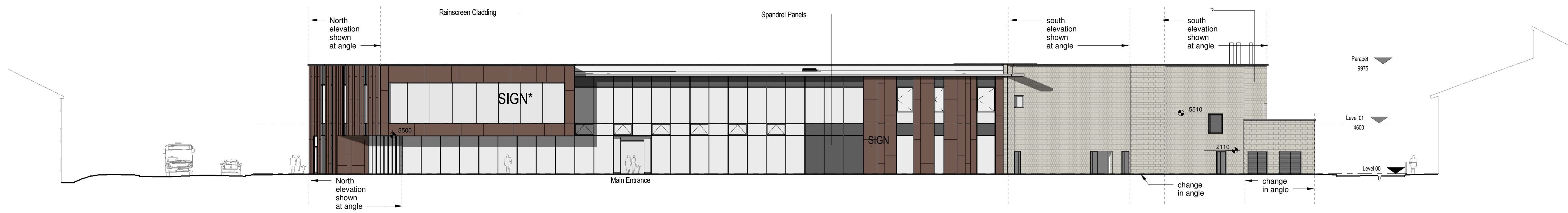


Notes
 Copyright. All rights reserved.
 This drawing must not be reproduced without permission.
 The drawing must not be scaled. Dimensions are in millimetres unless specified.

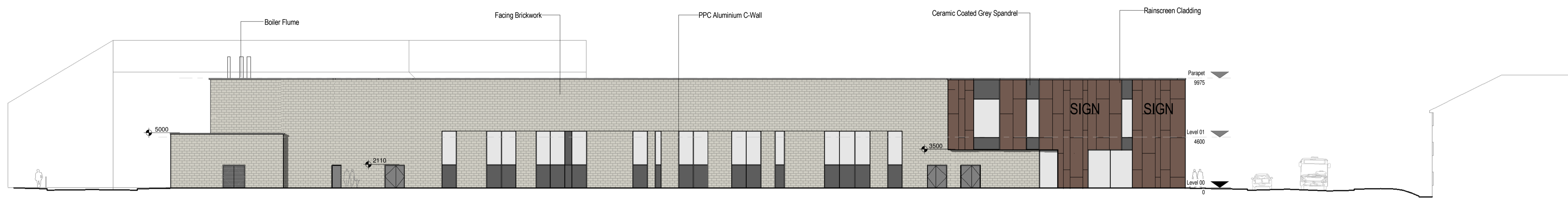
SIGN - Building mounted signage to be illuminated (text to be confirmed)

SIGN* - Vinyl applied signage to glazing (text to be confirmed)

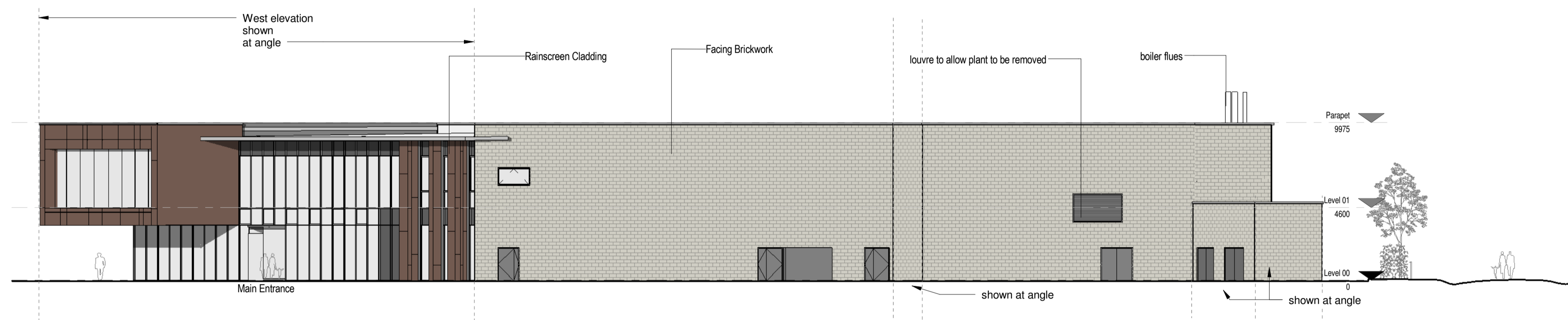
Note Brickwork hatch size not correct scale to enable it to be read at A3.



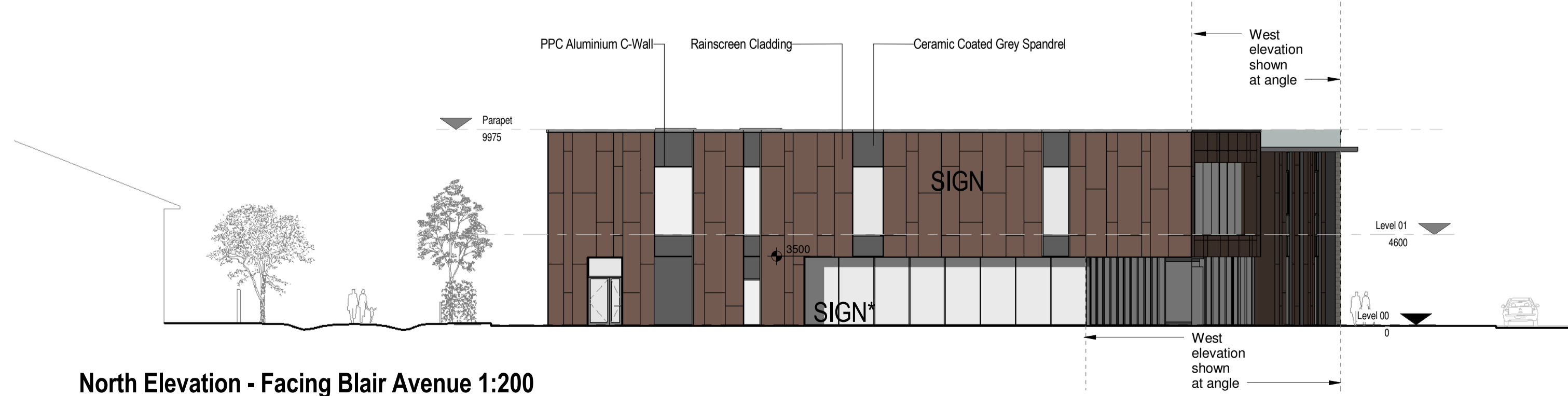
West Elevation - Facing Carpark 1:200



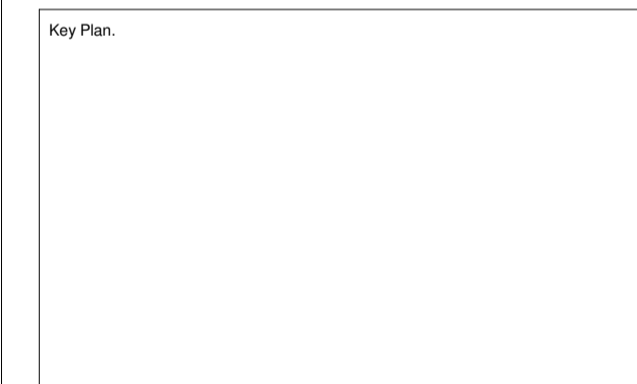
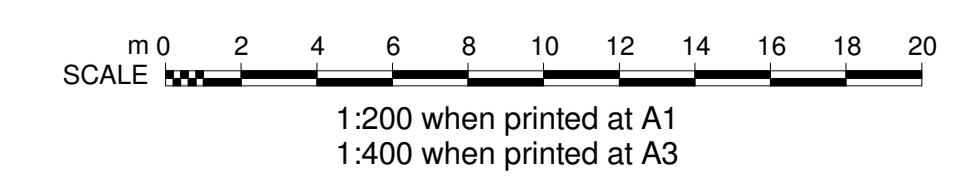
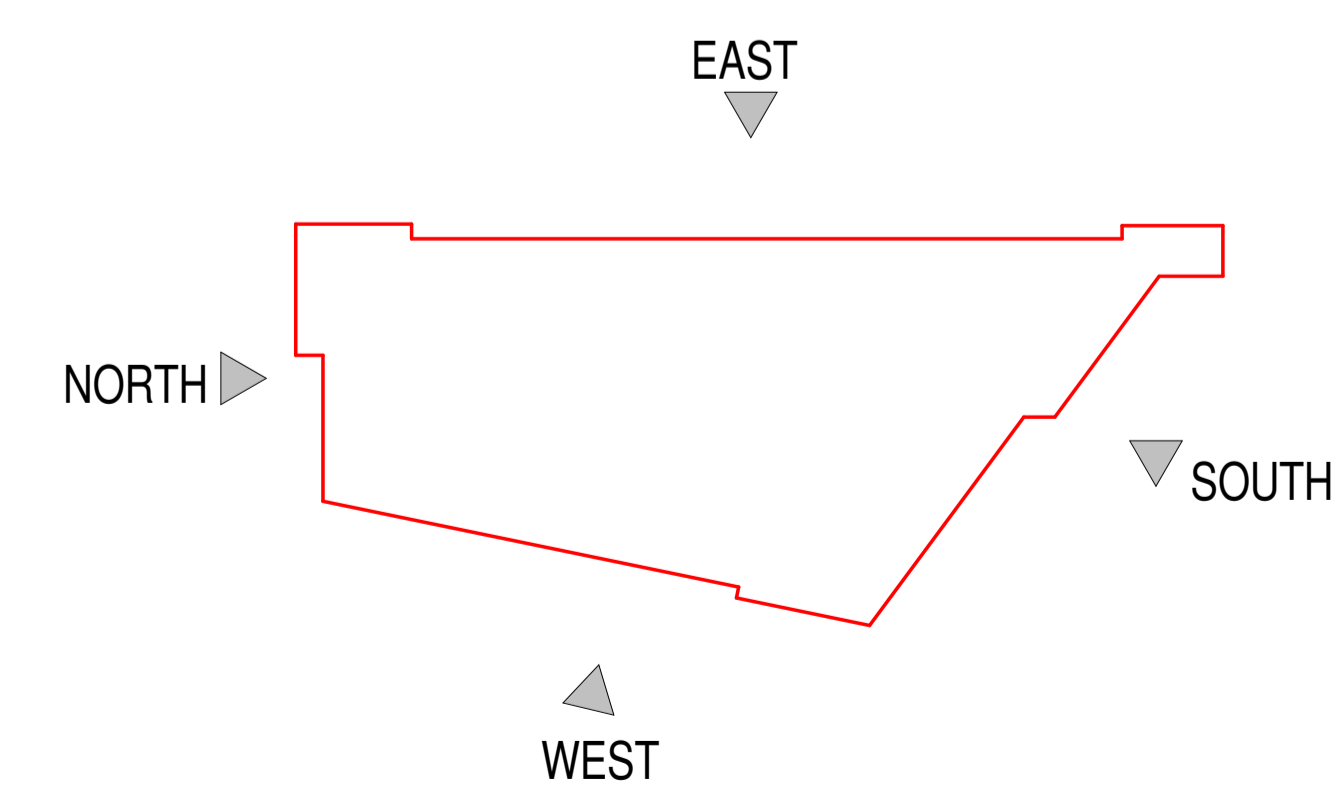
East Elevation - Facing Cycle Way 1:200



South Elevation - Facing All Saints Academy 1:200



North Elevation - Facing Blair Avenue 1:200



Rev.	Date	Rev. Note	By	Check
H	11-11-16	SBC comments	EWA	
G	09-11-16	SBC comments	EWA	
F	07-11-16	SBC various comments	EWA	
E	28-10-16	Rear Elevation, Signage	EWA	
D	25-10-16	Windows Amended	EWA	
C	25-10-16	Floor Height	EWA	
B	02-10-16	IMAE plant added	EWA	
A	01-08-16	Variations	EWA	

EWI™
 EllisWilliams Architects
 Wellfield, Chester Road
 Preston Brook WA7 3BA
 T: +44 1928 752 200
 F: +44 1928 795 953

Job Site Ingleby Barwick			
Drawing title Elevations			
Status PLANNING			
Drawn by SM	date 06/21/16	checked by RP	Scale at A1 As indicated
Job No. 2193	Drawing number AP(5)-01	Revision H	
Contractors Drawing No.			